

# Digital Matrix Intercom Commander Orator



**trilogy**

## System

Commander and Orator digital matrix intercom systems are well proven with hundreds of installations across the world offering reliable communication in all conditions. They may be used separately or in combination with each other. It is also possible to integrate systems with Trilogy's Mercury IP intercom technology which may be used to provide an IP based extension to an existing system or a networked addition to Commander and Orator creating a uniquely flexible solution for all communication needs.

## Commander

Commander is a large capacity system with up to 576 x 576 port capacity. Each 6RU frame takes up to sixteen matrix port cards each of which handles 6 ports providing a frame capacity of 96 x 96. Up to six frames may be linked directly together to increase the capacity to 576 x 576. Additional capacity can then be added by networking with other Commander or Orator systems. The "core matrix set" provides the frame, psu, tdm and talkback controller cards. This may be upgraded to add redundant power supplies and back up tdm and talkback controller cards where required.

## Orator

Orator is a very cost effective system in a 2RU frame. Supplied as standard with 18 x 18 ports, an additional field upgrade adds a second card with 18 x 18 capacity to provide a 36 x 36 matrix. A second hot swappable, redundant power supply may also be fitted.



**Commander digital matrix intercom installed at BBC London**

The link between matrices and control panels is via CAT 5 cable with RJ45 connectors. Each matrix port can be used for panels or 4 wire connections in any combination.

Commander and Orator matrices may be connected together as required to produce multi point networked configurations using E1 digital links or RS422 and standard audio trunk lines. It is also possible to link with Trilogy Mercury IP intercom systems and to use a Mercury Interface Unit (MIU) to provide remote, IP links.



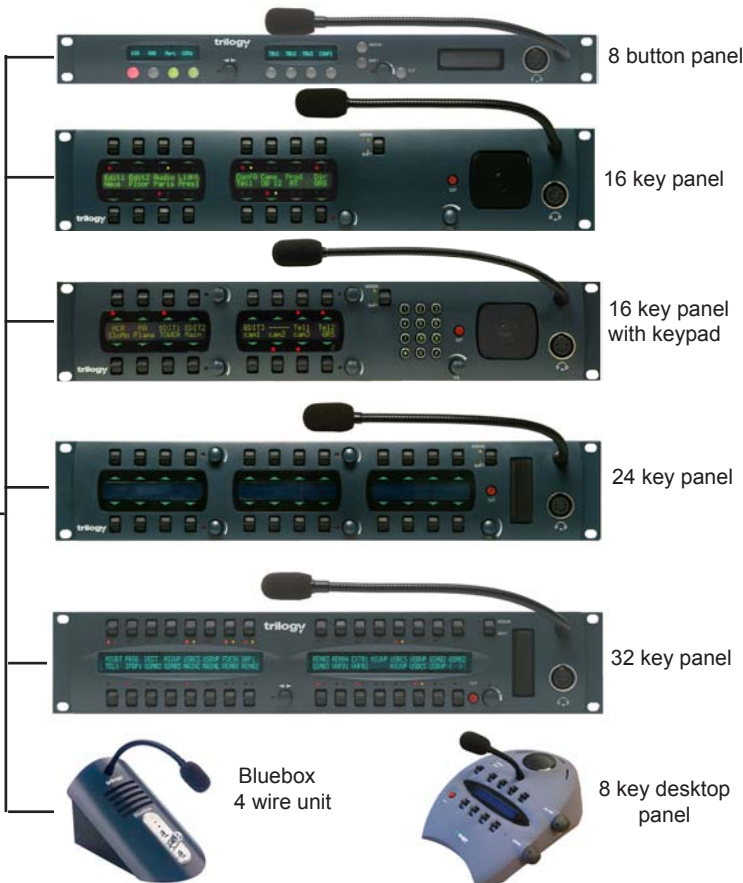
## Panels

A wide range of control panels is available in 1RU, 2RU and deskmount formats to suit differing requirements. Numbers of keys or pushbuttons vary from 1 to 32 (more to special order).

### Features include:

- Key assignment to any source or destination
- Key action can be configured as speak, listen, speak / listen, gpi triggers - with latching or non latching function (all software configured)
- Shift key access to second level assignment
- 5 character labels
- Local gpi's
- Assign key allows user to reassign any or all keys
- Telephone keypad allows dialling of any number via optional telephone interface unit\*
- Assignable gain controls
- Quick response key (QRS) with 8 call stack
- Custom panels to special order

\*certain panels only

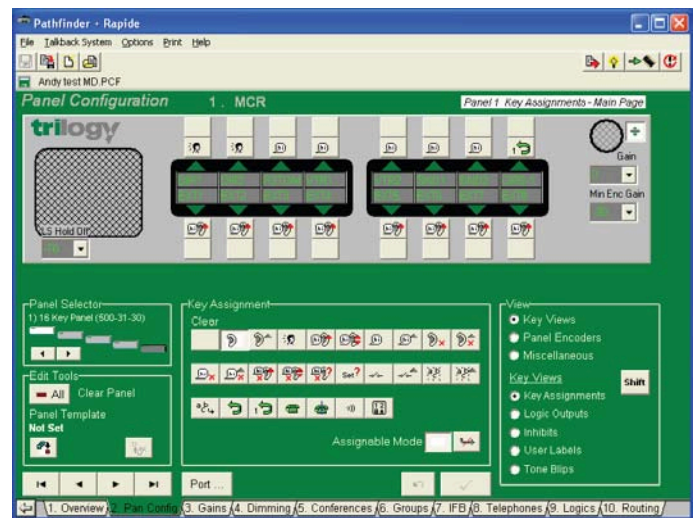


## Interfaces

All matrix ports on Commander and Orator may be used for panels, 4 wire connections etc. in any combination. In addition, a wide range of other equipment may be interfaced to the matrices including:

- ▶ **Beltpacks**
- ▶ **Headsets**
- ▶ **Telephone interfaces**
- ▶ **UHF / VHF radio (wireless talkback)**
- ▶ **Presenters wireless earpiece**
- ▶ **DectCom licence free wireless**

## Software



Screenshot of Pathfinder configuration editor

Both Commander and Orator are able to store four complete configurations within the matrix itself and these can be selected and run at any time without the matrix being connected to a PC. To prepare and edit these configurations, a software editor package is required. Commander uses Pathfinder whilst Orator uses Pathfinder Lite for this task. In both cases an optional add-on known as Rapide allows changes to be made whilst the system is online (with PC connected).

Key actions, panel labels, gains, groups, conferences, QRS key, dimming, network trunks, IFB's etc. may all be set using these intuitive Windows based tools .

## Specification

### Orator matrix

2RU rack mounting

**Capacity** -18 x 18 or 36 x 36 field expandable

### Commander matrix

6RU rack mounting plus 2RU power supply

**Capacity** - 96 x 96 in one frame (16 x 6 port cards)  
Six frames may be directly linked together to provide 576 x 576 in a continuous matrix

**Connectors** - RJ45 for panels and 4 wire ports

**Audio inputs** - electronically balanced, earth free  
(transformer isolation optional on Commander)

**Maximum level** +20dBu

**Audio outputs** - electronically balanced, earth free  
(transformer isolation optional on Commander)

**Maximum level** +20dBu into 600 ohms

**Gain adjustment** -37 dB to +12dB

**Frequency response** 20 Hz to 14 kHz  $\pm$  3 dB

**Noise** -60dB CCIR quasi peak weighted

**Response time** < 40mS from keypress to crosspoint operation

### Ordering information

#### Commander matrix

Commander Core Matrix 8RU Set **500-50-00**  
The Commander Core Matrix Set includes a 6 RU matrix frame with 1 TDM controller card, 1 Talkback controller card, 1 Changeover Board, and a 2 RU power supply chassis fitted with a single PSU

Commander Control Card Redundancy Set **500-55-00**  
Comprises 1 TDM Controller Card and 1 Talkback Controller Card

Commander Redundant Power Supply **500-15-30**

Commander 6 Channel Matrix card **500-06-02**

Matrix card Rear Connector - RJ-45 Connectors **500-07-50**  
RJ-45 Connectors plus D25 wired in parallel.

Matrix card Rear Connector - D9 connectors **500-07-20**  
D9 Connectors with input/output transformers.

Commander GPI Board **500-10-00**  
28 Inputs / 24 Outputs 6 Tone Generators Monitoring Selector

Commander GPI Board Rear Connector Unit **500-14-00**

Commander Inter-System Networking Board **500-25-00**  
6 channel networking between matrices.

Commander Inter-System Network Board Rear Connector Unit **500-26-00** with RJ45 and BNC connector

## Orator Matrix

Orator 18 x 18 matrix 2RU including psu **450-00-00**

18 x 18 port expansion card **450-01-00**

Redundant psu **450-02-00**

Inter system networking card **450-10-00**  
6 channel networking between matrices with RJ45 connector

## Panels

All panels include fixed gooseneck or internal microphone and loudspeaker with level control. RJ45 connector to Commander or Orator matrix.

1 button desktop panel Bluebox **440-00-00**

8 Lever Key LCD desktop panel **500-41-60**

8 Button VFD Panel 1RU **500-45-00**

10 Button LCD Panel 1RU **500-46-00**

10 key LED Panel 1RU **500-42-50**

16 Lever Key LCD Panel 2RU **500-31-60**

16 Lever Key LCD Panel with Dial Keypad 2RU **500-31-51**

24 Lever Key LCD Panel 2RU **500-30-50**

32 Lever Key VFD Panel 2RU **500-33-00**

Dual Channel Telephone Interface with Integral Digital Hybrid 1RU **500-19-54**. Connects two analogue telephone lines. Includes DTMF dialling and auto answer facility. 1RU frame including power supply unit

## Software

Pathfinder Configuration Software for Commander Systems **500-96-01**

Pathfinder Lite Configuration Software for Orator systems **450-03-00**

Rapide On-Line Upgrade for Pathfinder **500-96-03**

Rapide On-Line Upgrade for Pathfinder Lite **450-04-00**

### Trilogy Communications Ltd

26 Focus Way  
Andover  
Hampshire SP10 5NY  
United Kingdom  
Tel +44(0) 1264 384000  
Fax +44 (0)1264 334806  
email: sales@trilogycomms.com  
[www.trilogycomms.com](http://www.trilogycomms.com)



### Trilogy USA Inc

2500 E. Hallandale Beach Blvd  
Suite 808, Hallandale Beach  
FL 33009-4841  
USA  
Tel +1 847-461-1480  
Toll Free Tel/Fax from US: 800-372-3198  
email: sales@trilogyus.com  
[www.trilogycomms.com](http://www.trilogycomms.com)